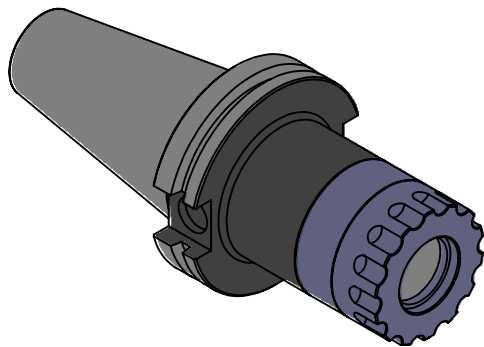
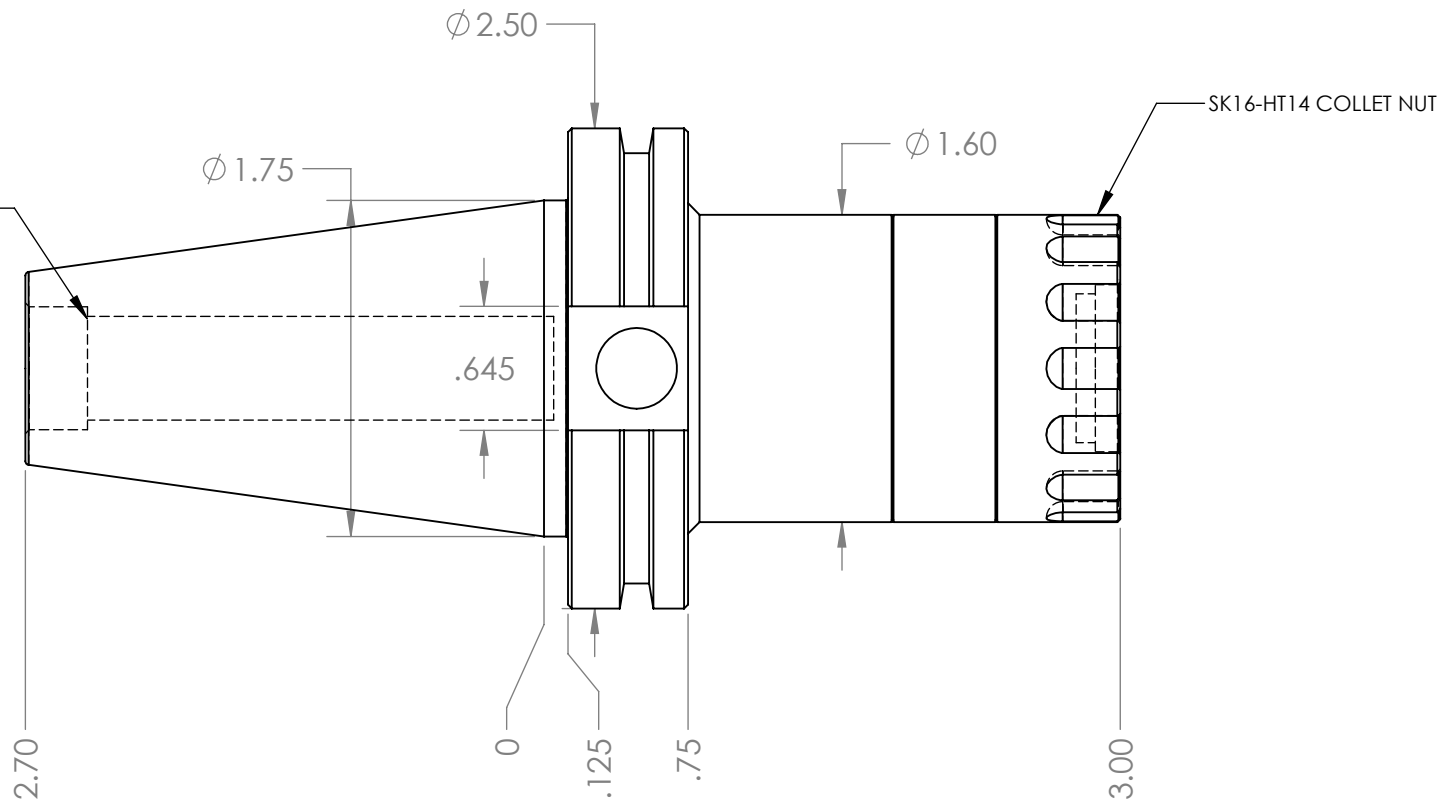


5/8-11 THREAD x 1-1/8 DEEP  
C'BORE DIA .642 x .300 DEEP



NOTES:  
WORKS ON ALL CAT40 MACHINES  
TAKES ALL SK16-HT14 COLLETS FROM .09"-.630"  
USES WRENCH PART # HT14-TWA TORQUE WRENCH (NOT INCLUDED)  
FOR MORE PRODUCT DETAILS PLEASE GO TO MARITOO.COM  
AND SEARCH ITEM # LISTED ON THIS PRINT

**MARITOO**

WWW.MARITOO.COM

ITEM# **CAT40 SK16-3.0-HT**

Made in USA